

ConnectCode Barcode Fonts

---

# ConnectCode Barcode Fonts

*<http://www.barcoderesource.com>*

General Enquiry : [info@barcoderesource.com](mailto:info@barcoderesource.com)  
Copyright (c) 2008-2010, ConnectCode Pte Ltd.  
All Rights Reserved.

Microsoft and Microsoft Excel are registered trademarks of Microsoft Corporation. All other product names are trademarks, registered trademarks, or service marks of their respective owners

# Table of Contents

<b>1.</b>	<b>CONNECTCODE BARCODE FONTS .....</b>	<b>1-1</b>
1.1	What is a Barcode/Barcode Font?.....	1-1
1.2	Using ConnectCode Barcode Fonts .....	1-1
1.3	Encoder screenshot.....	1-2
1.4	Why use ConnectCode?.....	1-2
	1.4.1 Industry Specifications Adherence .....	1-2
	1.4.2 Simplicity.....	1-3
	1.4.3 Multiple Barcode Sizes .....	1-3
	1.4.4 Integration .....	1-3
	1.4.5 Windows Presentation Foundation Integration .....	1-3
	1.4.6 Produce Images.....	1-3
1.5	Barcodes Supported .....	1-4
1.6	Sample Barcodes created with Connectcode Fonts .....	1-5

# 1. CONNECTCODE BARCODE FONTS

ConnectCode is a professional True Type (TTF) Barcode Font that is designed for use in modern operating systems. It allows you to create different types of barcodes by selecting a font in your favorite text editor.

## 1.1 What is a Barcode/Barcode Font?

A barcode is a series of parallel alternating black and white patterns that represents a sequence of numbers or characters. You will be able to use specialized software applications or barcode fonts to generate these patterns.

A barcode font is a specially designed font that allows you to specify and generate barcodes on normal text characters. It is extremely easy to use. You can just install the font, load up your text editor like Wordpad or Word to create the barcodes. Most computer applications today that support text allow you to choose from among many fonts.

## 1.2 Using ConnectCode Barcode Fonts

ConnectCode ships with an **Encoder** that prepares raw data into a form suitable for barcode encoding. It can also create images out of the barcode fonts. Additionally, a variety of tools, applications and source codes are provided to ease integration with third party products. This includes Microsoft Office Macros, Crystal Reports Formulas, Oracle PL/SQL and Windows Presentation Foundation samples.

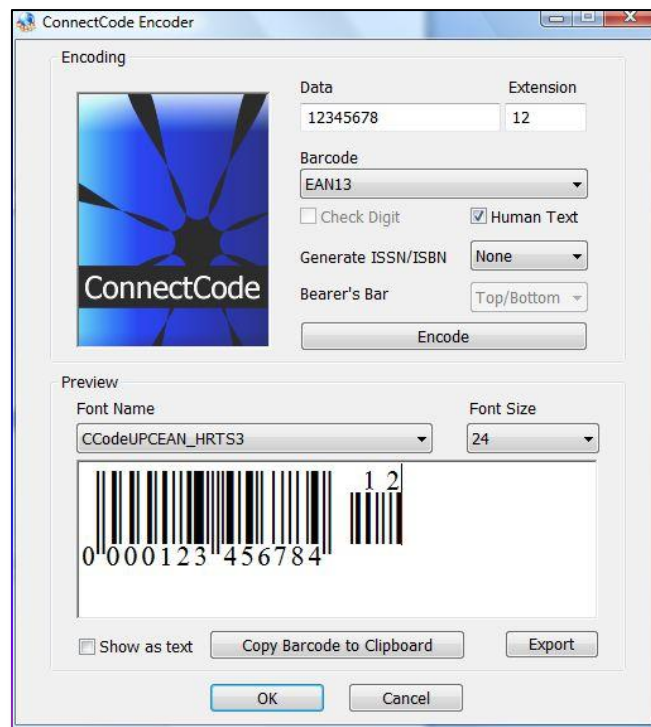
### Some applications that ConnectCode Barcode Fonts will work with

- MS EXCEL
- MS WORD
- MS ACCESS
- CRYSTAL REPORTS
- ORACLE DATABASE

### Furthermore, ConnectCode Barcode Fonts will integrate with

- Applications written in C#
- Applications written in VISUAL BASIC
- Applications written in C# (WINDOWS PRESENTATION FOUNDATION)
- Applications written in VISUAL BASIC (WINDOWS PRESENTATION FOUNDATION)
- Applications written in VISUAL C++

## 1.3 Encoder screenshot



## 1.4 Why use ConnectCode?

It is important to choose a barcode font carefully. There are many barcode fonts offered in the industry. They come in a variety of sizes and prices. The following are factors we strongly advise you to look at before purchasing one.

### 1.4.1 Industry Specifications Adherence

One of the most important factor for choosing a barcode font is that it adheres to industry specifications. For example, the following properties will need to be considered carefully.

- Thick bar width
- Thin bar width
- Barcode ratio
- Barcode density

This is to ensure that the barcode created is highly scannable. Ever wondered why the scanning of barcode in some supermarkets looks so difficult and takes so long? The main reason is the barcode has not been created properly and cause the barcode scanners to take a longer time to process.

ConnectCode Barcode Font has been created and tested vigorously by a team with many years of experience in the Auto-ID and IT industry. It takes into consideration all the above mentioned properties and is definitely one of the best barcode font around.

#### **1.4.2 Simplicity**

Ease of use has always been an important consideration in ConnetCode. Similar products in the industry require a complicated encoder application that generates mystic numbers and alphabets for the specification of the barcode.

ConnectCode does make use of an encoder as well. However, the fonts have been designed in such a way that a user can even specify a barcode by keying in the characters directly as much as possible.

#### **1.4.3 Multiple Barcode Sizes**

Each barcode font in ConnectCode comes with a minimum of 7 sizes. On top of that, some barcodes like UPC and EAN come with human readable text support.

#### **1.4.4 Integration**

ConnectCode comes with a vast variety of tools, applications for ease of integration with Third Party products.

- Encoder Application
- Microsoft Office Macros - For ease of use in Microsoft Word, Access, Publisher and Excel etc..
- Crystal Reports Formulas
- Oracle PL/SQL
- WPF Applications Integration
- .NET 2 Projects Integration
- MFC Projects Integration

#### **1.4.5 Windows Presentation Foundation Integration**

Bar codes can be easily added into Windows Presentation Foundation applications (.NET 3) with ConnectCode's dynamic link library. The download package includes two WPF samples with source code that details the exact steps necessary to do so.

#### **1.4.6 Produce Images**

A special feature of the Encoder creates high resolution images out of the barcode fonts. This combination of fonts and images offered by ConnectCode makes it one of the most versatile products in enabling barcodes for enterprises and personal use.

## 1.5 Barcodes Supported

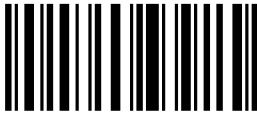
- CODABAR BARCODE
- CODE39 BARCODE
- CODE39 ASCII BARCODE
- CODE93 BARCODE
- CODE128 AUTO BARCODE
- CODE128A BARCODE
- CODE128B BARCODE
- CODE128C BARCODE
- UCCEAN BARCODE
- I2OF5 BARCODE (INTERLEAVED 2 OF 5)
- INDUSTRIAL 2OF5 BARCODE
- ITF14 BARCODE
- MODIFIED PLESSY BARCODE
- POSTNET BARCODE
- EAN 13 BARCODE (EUROPEAN ARTICLE NUMBERING)
- EAN 8 BARCODE
- UPCA BARCODE (UNIVERSAL PRODUCT CODE)
- UPCE BARCODE
- ISBN BARCODE (INTERNATIONAL STANDARD BOOK NUMBER)
- ISSN BARCODE (INTERNATIONAL STANDARD SERIAL NUMBER)
- EXT2 BARCODE
- EXT5 BARCODE
- GS1 DATABAR 14
- GS1 DATABAR TRUNCATED
- GS1 DATABAR LIMITED
- GS1 DATABAR STACKED
- GS1 DATABAR STACKED OMNIDIRECTIONAL
- GS1 DATABAR EXPANDED
- GS1 DATABAR EXPANDED STACKED

## 1.6 Sample Barcodes created with Connectcode Fonts

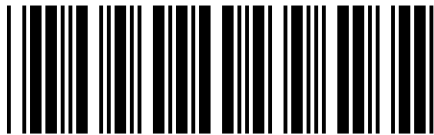
BARCODE: CODE 128AUTO  
VALUE: 12345690  
FONT SIZE : 24



BARCODE: CODE 128AUTO  
VALUE: 12345698  
FONT SIZE : 20



BARCODE: CODE39  
VALUE: 24680  
FONT SIZE: 24



BARCODE: EAN13 (WITH HUMAN READABLE)  
FONT SIZE: 24

